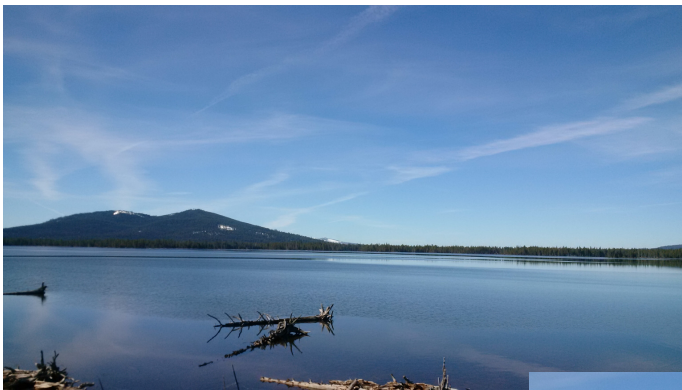


## MAY 04 - CONCRETE JUNGLE (RENO) & ESCAPE TO VIRGINIA CITY, NV

After a delightful stay at Cave campground, we headed east this morning towards Reno, NV. Something tells me that we are at altitude - look at the snow on the side of the road!



As we continued towards Reno, we passed two reservoirs: McCoy Flat and Hog Flat. As you can see there is water everywhere and there's still snow in the mountains waiting to melt!



I had programmed our GPS for the Information Centre in Reno. Who knew it was right downtown?!

I really don't understand why some of the US states don't put tourist info centres where you enter the state?!

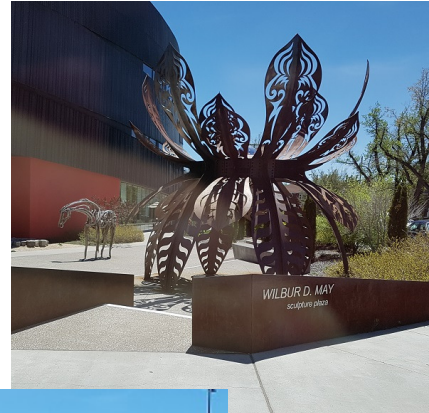
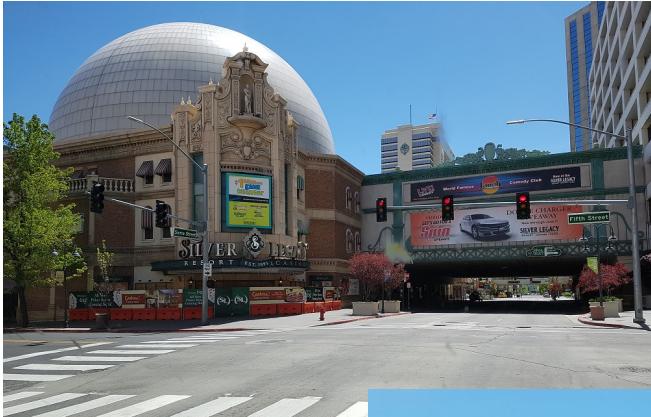
It was the same thing in Oregon - the first info centre driving south on I5 is downtown Portland!



Okay, rant over. We quickly got out of downtown and headed for our destination - Virginia City.

On our maps Virginia City is equidistant from Tahoe, Reno, and Carson City - a perfect place to spend a few days and explore the area.

Reno: "the biggest little city in the world". Uh huh... I don't know when that moniker was last used, but today it is just a giant concrete slab with buildings and freeways scattered all over the place. Not our idea of a place we want to spend any amount of time exploring.



I set our GPS (Maud) for Virginia City which got us off the freeway. I stopped just afterwards and reprogrammed Maud for an RV park we had the address to in Virginia City - might as well go directly there.

And then we started an almighty climb - in 8 miles we climbed 2,800!!! The views were spectacular.



The road was very windy and steep. It hugged the mountainside as we climbed towards the heavens. Do we believe Maud—is she leading us astray or is there an easier way??

We persevered and crested the Geiger Summit at 6,789'. On the other side, we dropped a few hundred feet and rolled into Virginia City.





I won't bore you with how we got lost looking for the RV park. I'll just mention that Virginia City is on the side of a large hill, so while the main drag is across the hill (on a slight incline), the side roads off the main drag are very steep (a la some streets in San Francisco). We were looking for B street and ended up at K street way down the hillside. After stopping for directions, we climbed back up the hillside and found the RV park. Afterwards, in the office, I learned that GPS does not work - it leads you to the other end of town! Been there, done that!

We set up camp, with a view of the old cemetery, then went for pizza and beer for dinner.



We sat at the bar and enjoyed some local brew. I had a "dirty Wookiee", a 7.2% dark brew.

Mmmm, delicious. Jen had a stout that I found a little too nutty.

We've decided to stay a second night and explore Virginia City tomorrow. See you then.